

# NVNT-WORKM

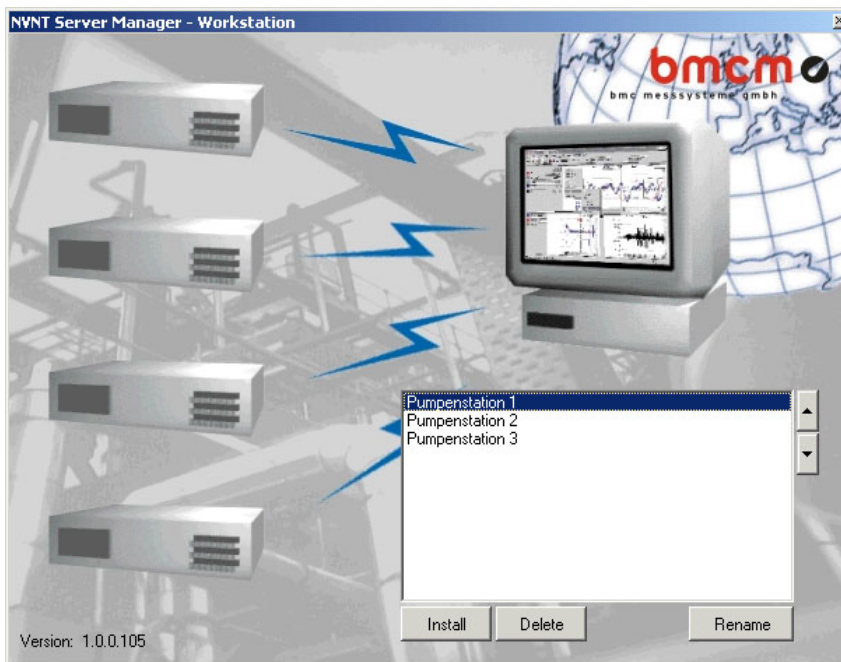
NextView®/NT Workstation and Server Manager

## Features

- configuration of NVNT servers
- administration of NVNT servers
- easy-to-use

## Applications

- supervision of processes
- research and science
- environmental technology
- remote access: monitoring and control of different measuring systems across long distances



Setting up the server stations in the Server Manager is done once using the

... configuration disk ...,

created during installation of NextView®/NT Server containing all specific information of the respective measuring system. So all configuration data of a measuring system are directly passed to the Server Manager.

Of course, you can rename, remove or add a server station in the server manager at any time.

When starting NextView®/NT Workstation automatically a window opens where you can select the relevant server station.

With NVNT-WORKM the modern measuring data and analysis software NextView®/NT introduces another NVNT-product making the realization of measurement applications even more user-friendly and comfortable.

It is addressed to users of

... NextView®/NT  
Client-Server systems ...,

operating with several NextView®/NT server stations. Those can now be selected from one NextView®/NT Workstation. So you can get a connection to different, independent measuring stations, view livedata or set the parameters for a scan.

NVNT-WORKM itself is a combined software package comprising

... NextView®/NT Workstation  
and a Server Manager ...,

running on Windows® 98/2000 or NT. With the **Server Manager** a supplementary component is installed during the installation of NextView®/NT Workstation allowing the

... access to different servers ... .

That means that

... from one workstation ...

various NextView®/NT measuring systems can be controlled even across long distances (inter-, intranet). In addition TCP/IP makes remote supervision via modem possible without any problems as those network connections are Windows® standard.

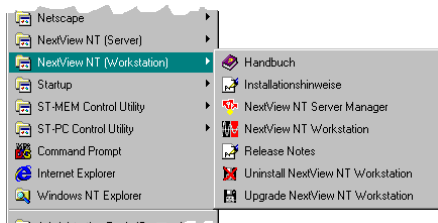


Protection against unauthorized access is guaranteed by a server-side password query with different user levels. Only users get access to the server who have been registered on it.

## Installation and program start

The installation of NVNT-WORKM is done by means of the "NextView<sup>®</sup>/NT"-CD you received with delivery. Like the installation of NextView<sup>®</sup>/NT Workstation it takes place after the server installation. Please refer to the included installation manual for NextView<sup>®</sup>/NT Client-Server. If you have already installed NextView<sup>®</sup>/NT Workstation on your PC, the software still must be completely reinstalled.


With the purchase of the software package you have received a license number, which is required during installation. It is the guarantee for the installation of the Server Manager together with NextView<sup>®</sup>/NT Workstation.



After the successful installation you will find the additional entry "NextView NT Server Manager" in the same program group as NextView<sup>®</sup>/NT Workstation depending on the settings you have made during installation. To start the Server Manager click on this entry or open the file `nvsconf.exe` which is in the same program directory as NextView<sup>®</sup>/NT Workstation (`next-viewnt.exe`).

## Operation of the Server Manager

The user interface of the Server Manager displays a list box with all servers, that have been installed in the Server Manager. So when first starting the software only that server is listed, which has been declared as server during installation of NextView<sup>®</sup>/NT Workstation. A right-click on the list box opens the accompanying context menu with frequently used commands. The server name indicated has been set during installation, but can be changed at any time pressing the button *Rename*. For installation of an additional server please have the configuration disk ready created during installation of NextView<sup>®</sup>/NT Server at the respective server station.

<i>Install</i>	Setting up an additional server: Insert the configuration disk of the respective server into your floppy drive and switch after pressing the button <i>Install</i> to the disk directory A:\. Opening the file <code>winstall.inf</code> shows the new installed server in the Server Manager.
<i>Delete</i>	Delete the selected server in the Server Manager.
<i>Rename</i>	Rename the selected server.
<i>Update list</i>	All entries in the registry are checked and displayed.
<i>Show tooltips</i>	Display tooltips.
	Move the selected server one position up/down in the list box. If nothing else is selected when starting NextView <sup>®</sup> /NT Workstation, usually the workstation connects to the server on the first position.



- **Make sure that the installation of NextView<sup>®</sup>/NT Server has been done correctly on all stations and that the configuration disks have been written.**
- **The servers installed in the Server Manager must have the same version as NextView<sup>®</sup>/NT Workstation. Otherwise no connection is possible.**
- **Mind to assign a different IP address to each server. In case of problems please contact your network administrator.**
- **When changing the server configuration or the measuring system the respective server must be removed from the Server Manager (button *Delete*) and reinstalled (button *Install*).**

## Server selection in NextView<sup>®</sup>/NT Workstation

When starting NextView<sup>®</sup>/NT Workstation with the Server Manager, automatically a dialog is opened listing the installed servers. Select the server you need to connect to.



**You will only get access to a measuring system, where you have been registered as user at the respective server. In case of problems please contact your network administrator.**